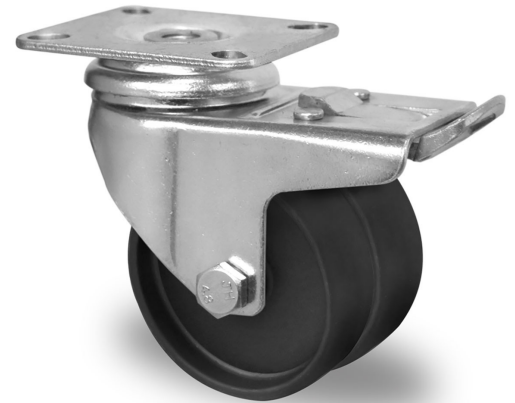


TDPE6C0050N4N4P0N

## SWIVEL CASTOR WITH TOTAL BRAKE Ø 50 MM SERIES N4N4 PLAIN BEARING

### WHEEL

wheel diameter in mm	50 mm
wheel width in mm	18
hub width in mm	44
screw size	M6
tread	polyamide black
wheel center	polyamide black
bearing	plain bearing
threadguard	without separate threadguard
temperature range	-20°C to +60°C



### HOUSING

material thickness fitting in mm	2.50
material thickness fork in mm	2.00
fitting	plate
mounting dimension in mm	48 / 38 x 48 / 38
offset dimension in mm	25
total height in mm	70
swivel radius in mm	80
dyn. load capacity in kg	70
test norm	DIN EN 12530

