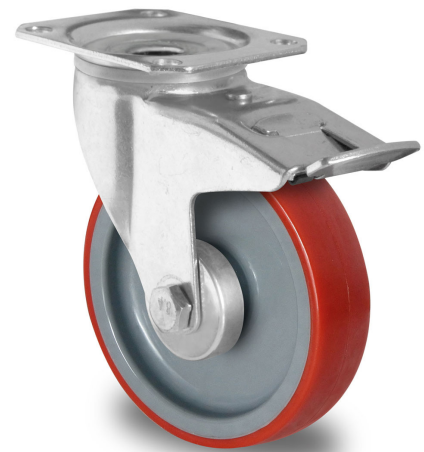


TBP35WC125N2U6R1W

SWIVEL CASTOR WITH TOTAL BRAKE Ø 125 MM SERIES N2U6 ROLLER BEARING

WHEEL

| | |
|----------------------|---|
| wheel diameter in mm | 125 mm |
| wheel width in mm | 32 |
| hub width in mm | 50 |
| screw size | M10 |
| tread | thermopl. polyurethane 95° shore A red |
| wheel center | polyamide grey |
| bearing | roller bearing |
| threadguard | small metal threadguard |
| temperature range | -40°C to +80°C |



HOUSING

| | |
|----------------------------------|--------------|
| material thickness fitting in mm | 2.50 |
| material thickness fork in mm | 2.50 |
| fitting | plate |
| mounting dimension in mm | 80 / 77 x 60 |
| offset dimension in mm | 45 |
| total height in mm | 155 |
| swivel radius in mm | 127 |
| dyn. load capacity in kg | 200 |
| test norm | DIN EN 12532 |

