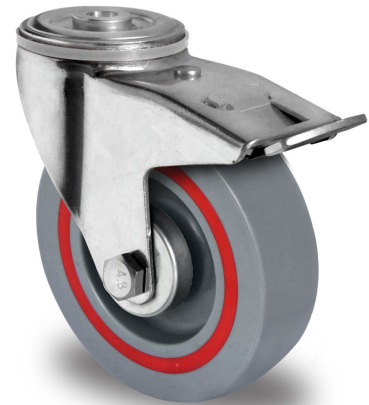


BPH35WC100T6P2R1W

BOLT HOLE SWIVEL CASTOR WITH TOTAL BRAKE Ø 100 MM SERIES T6P2 ROLLER BEARING

WHEEL

wheel diameter in mm	100 mm
wheel width in mm	36
hub width in mm	40
screw size	M8
tread	polypropylene grey
wheel center	polypropylene grey with TPE ring red
bearing	roller bearing
threadguard	small metal threadguard
temperature range	-20°C to +60°C



HOUSING

material thickness fitting in mm	2.50
material thickness fork in mm	2.50
fitting	bolt hole
mounting dimension in mm	13
offset dimension in mm	40
total height in mm	127
swivel radius in mm	127
dyn. load capacity in kg	160
test norm	DIN EN 12532

