

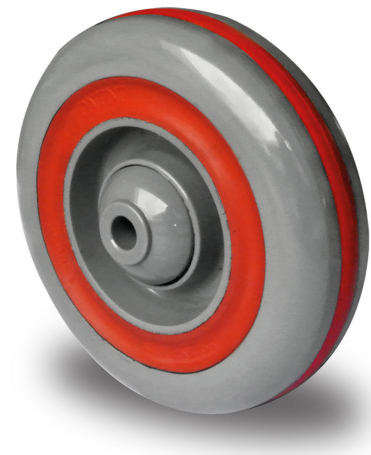


125M6K6B32

WHEEL Ø 125 MM SERIES M6K6 BALL BEARING

WHEEL

wheel diameter in mm	125 mm
wheel width in mm	35
hub width in mm	50
screw size	M10
tread	polyamide grey with elastic ring red
wheel center	polyamide grey with elastic ring red
bearing	ball bearing
threadguard	small nylon threadguard
temperature range	-20°C to +80°C



HOUSING

material thickness fitting in mm	
material thickness fork in mm	
fitting	
mounting dimension in mm	
offset dimension in mm	0
total height in mm	
swivel radius in mm	0
dyn. load capacity in kg	200
test norm	DIN EN 12532

**CASCOO Europe GmbH**

Lütke Haar 15 • 59602 Rüthen • Germany
+49 2952 - 970629-0
info@cascoo.eu • www.cascoo.eu