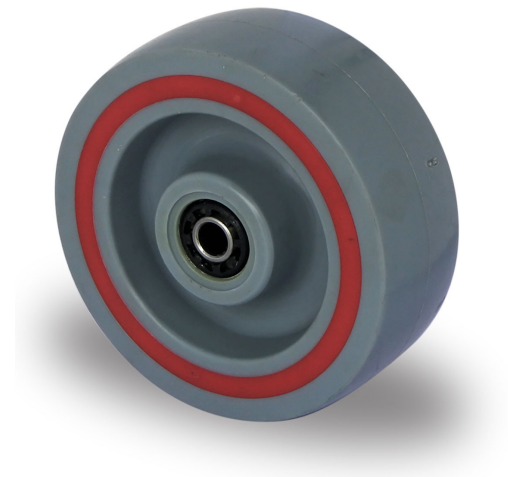


100T6P2R1W

## WHEEL Ø 100 MM SERIES T6P2 ROLLER BEARING

### WHEEL

wheel diameter in mm	100 mm
wheel width in mm	36
hub width in mm	40
screw size	M8
tread	polypropylene grey
wheel center	polypropylene grey with TPE ring red
bearing	roller bearing
threadguard	small metal threadguard
temperature range	-20°C to +60°C



### HOUSING

material thickness fitting in mm	
material thickness fork in mm	
fitting	
mounting dimension in mm	
offset dimension in mm	0
total height in mm	
swivel radius in mm	0
dyn. load capacity in kg	160
test norm	DIN EN 12532



### CASCOO Europe GmbH

Lütke Haar 15 • 59602 Rüthen • Germany  
+49 2952 - 970629-0  
info@cascoo.eu • www.cascoo.eu